



DEPARTMENT OF PLANNING AND NEIGHBORHOOD DEVELOPMENT

219 N. GRAND AVENUE • LANSING, MI 48933-1317 • (517) 483-4240 • FAX: (517) 483-4395

TRANSPORTATION AND PARKING OFFICE

Virg Bernero, Mayor

For Immediate Release
June 3, 2010

Primary Contact: Rich LaMay
517/483-6034
Secondary Contact: Mitch Whisler
517/483-4249

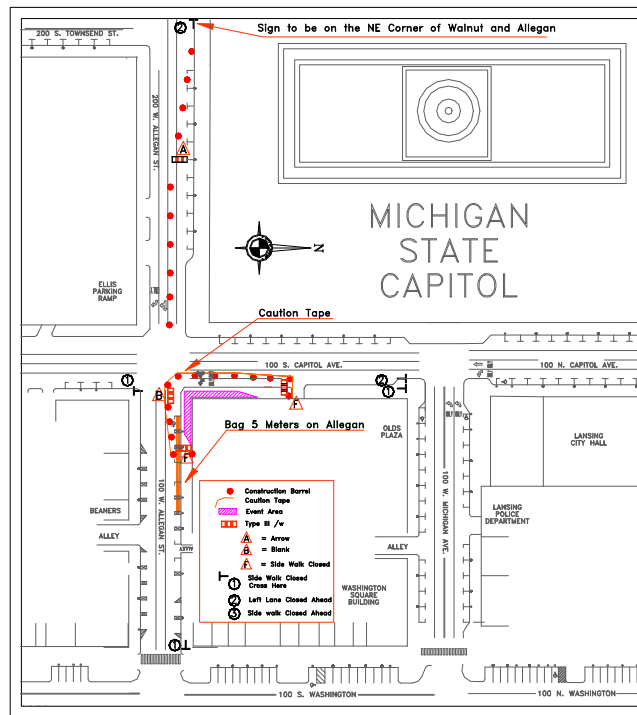
TRAFFIC ADVISORY

OVER THE EDGE EVENT TO REDUCE TRAVEL LANES ON ALLEGAN STREET AND CAPITOL AVENUE

The City of Lansing Department of Planning and Neighborhood Development announces that lane restrictions will be in place to allow the Over The Edge and Team Lansing Foundation to set up and perform rappelling demonstrations on Friday, June 4th and Saturday, June 5th on the side of the BOJI Tower.

Around 3:00 p.m. on Thursday, June 3, 2010 crews will be reducing vehicular travel in the northern most travel lane on Allegan Street between Walnut Street and Washington Square. Along with the eastern most travel lane on Capitol Avenue between Michigan Avenue and Allegan Street.

Motorists are advised to seek these alternate routes.



More Information may be found at www.lansingmi.gov