



# DEPARTMENT OF PLANNING AND NEIGHBORHOOD DEVELOPMENT

219 N. GRAND AVENUE • LANSING, MI 48933-1317 • (517) 483-4240 • FAX: (517) 483-4395

TRANSPORTATION AND PARKING OFFICE

Virg Bernero, Mayor

For Immediate Release  
September 11, 2008

Primary Contact: CSO Hotline  
517/394-5566  
Secondary Contact: Alec Malvetis  
517/483-4459  
Media Questions: Chad Gamble  
517/483-4452

## TRAFFIC ADVISORY

(Page 1 of 3)

### **GRAND AVENUE / OTTAWA STREET INTERSECTION** **TO CLOSE SEPTEMBER 13, 2008** **(CSO – 2008 DOWNTOWN PROJECT)**

The City of Lansing Department of Planning and Neighborhood Development announces that beginning on **Saturday, September 13, 2008, the Grand Avenue / Ottawa Street intersection will be closed to all traffic**, to facilitate construction on the City of Lansing's Combined Sewer Overflow Project.

During construction, access to both the N. Grand Parking Ramp and the adjacent N. Grand Expansion Parking Ramp (monthly permit parkers, only) will be from Grand Avenue via Ionia Street. Two-way traffic will be established on Grand Avenue between Ionia Street and Ottawa Street to ease congestion in and out of the parking ramps.

To improve access to the parking ramps, the parking lane on the south side of Ionia Street will be converted to an eastbound travel lane from Washington Square to Grand Avenue.

# TRAFFIC ADVISORY

(Page 2 of 3)

## **GRAND AVENUE / OTTAWA STREET INTERSECTION** **TO CLOSE SEPTEMBER 13, 2008** **(CSO – 2008 DOWNTOWN PROJECT)**

**The Transportation and Parking Office** will have on-site staff to assist motorists entering and exiting the N. Grand Expansion (monthly permit parkers only) and the N. Grand parking ramps during the following times.

**Between the Morning Hours of 7:00 a.m. to 9:00 a.m. Monday through Friday the following travel patterns will be in effect:**

N. Grand Ramp access will be from the converted southern most parking lane on eastbound Ionia Street to Grand Avenue, then right on Grand Avenue to access the N. Grand Ramp. During the morning peak hours the N. Grand Ramp entrance from Ionia Street will be closed.

N. Grand Expansion Ramp access will be from the northern most eastbound travel lane on Ionia Street, then south on Grand Avenue to make a left into the N. Grand Expansion Ramp temporary entrance.

**Between the evening Hours of 4:00 p.m. to 5:30 p.m. Monday through Friday the following travel patterns will be in effect:**

Vehicles parked in the N. Grand Expansion will be allowed to exit from either the temporary entrance (which will be a one way exit during evening hours), or use one of the cross overs to the N. Grand Ramp to exit. During the evening time access into both, N. Grand or the N. Grand Expansion will be from the Ionia Street entrance; N. Grand Expansion customers will need to access the N. Grand Expansion Ramp via the N. Grand Ramp on the second floor.

For additional assistance, Monday through Friday between the hours of 8:00 a.m. and 5:00 p.m. related to parking ramp operations please call (517)483.4240.

The posted detour for the closure of the intersection of Grand Avenue and Ottawa Street is north on Washington Avenue to Shiawassee Street; then east on Shiawassee Street to Grand Avenue.

*This closure is expected to remain in-effect until early-October of 2008.* Updates on the schedule regarding this street closure will be provided as appropriate.

Motorists are advised to expect delays and seek alternate routes whenever possible.

Colored Map available at [www.lansingmi.gov](http://www.lansingmi.gov)

#####

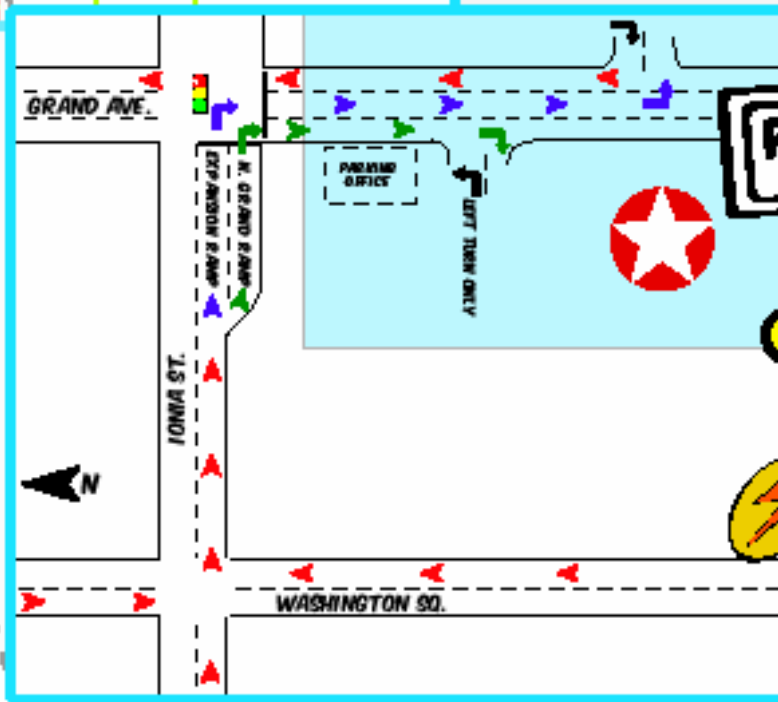
**ROUTE TO N. GRAND PARKING RAMP &  
 THE ADJACENT EXPANSION PERMIT PARKING RAMP.  
 BEGINNING SEPT. 13<sup>TH</sup>. FOR APPROXIMATELY THREE WEEKS**



**SWISH SAYS**

TO ACCESS BOTH N. GRAND PARKING RAMP & THE ADJACENT EXPANSION PERMIT PARKING RAMP FOLLOW THIS ROUTE:

**EAST ON IONIA ST.  
 TO GRAND AVE.**



**ENTRANCE ACCESS TO THE EXPANSION RAMP VIA GRAND AVENUE WILL BE AVAILABLE FROM 7:00-9:00 A.M. WITH EXIT ONLY FROM 4:00- 5:30 P.M. ENTRANCE AND EXIT ACCESS OUTSIDE OF THESE TIMES WILL BE THROUGH THE N. GRAND RAMP. FOR MORE INFORMATION CALL (517) 483-4240**

**"SWISH"**

**LEGEND**

	N. GRAND RAMP		EXPANSION RAMP
	CONSTRUCTION ZONE		MAJOR ROAD
	ACCESS ROUTE		N. GRAND AVE. & EXPANSION PERMIT PARKING RAMP