



DEPARTMENT OF PLANNING AND NEIGHBORHOOD DEVELOPMENT

219 N. GRAND AVENUE • LANSING, MI 48933-1317 • (517) 483-4240 • FAX: (517) 483-4395

TRANSPORTATION AND PARKING OFFICE

Virg Bernero, Mayor

For Immediate Release
April 16, 2010

Primary Contact: Richard LaMay
517/483-6034

Secondary Contact: Mitch Whisler
517/483-4249

TRAFFIC ADVISORY **DOWNTOWN STREETS and LANE CLOSURE FOR** **THE 2010 GURU NAMAK SIKH DAY PARADE**

The City of Lansing Department of Planning and Neighborhood Development announces to accommodate the *Guru Namak Sikh Day Parade*, the following lane reduction and street closings will be in effect on **Saturday, April 17, 2010**.

Streets reduced by one travel lane between 9:00 a.m. and 2:00 p.m.:

Grand Avenue eastern most travel lane between Shiawassee Street and Schoolcraft.

Streets reduced to no less than one travel lane between 10:30 a.m. and 2:00 p.m.:

Capitol Avenue, eastern most travel lane(s), between Saginaw Street and Ottawa Street.
Ottawa Street, northern most travel lane(s), between Grand Avenue and Capitol Avenue.

Short Duration Street Closings between 1:00 p.m. and 1:45 p.m.:

Grand Avenue between Shiawassee Street and Saginaw Street,
Schoolcraft between Grand Avenue and Capitol Avenue.

Will be closed by the Lansing Police Department (LPD) to allow parade participants to cross from Adado Riverfront Park and travel across Schoolcraft to Capitol Avenue with minimal delays.

Street to be closed between 12:00 p.m. to 2:00 p.m.

Washington Square between Ottawa Street and Shiawassee Street,
Ionia Street between Capitol Avenue and Grand Avenue;
Eastbound Shiawassee Street between Capitol Avenue and Grand Avenue;
Westbound Shiawassee Street between Cedar Street and Grand Avenue (except CATA and LFD).

Once parade reaches Capitol Avenue participants will be required to march in the designated travel lane and obey traffic signals and/or LPD personnel at street intersections. Shiawassee Street will remain open to limited westbound vehicular travel (CATA) under LPD supervision.

Access to all local businesses adjacent to the parade route will be maintained at all times. Motorists are advised to expect delays.

#####



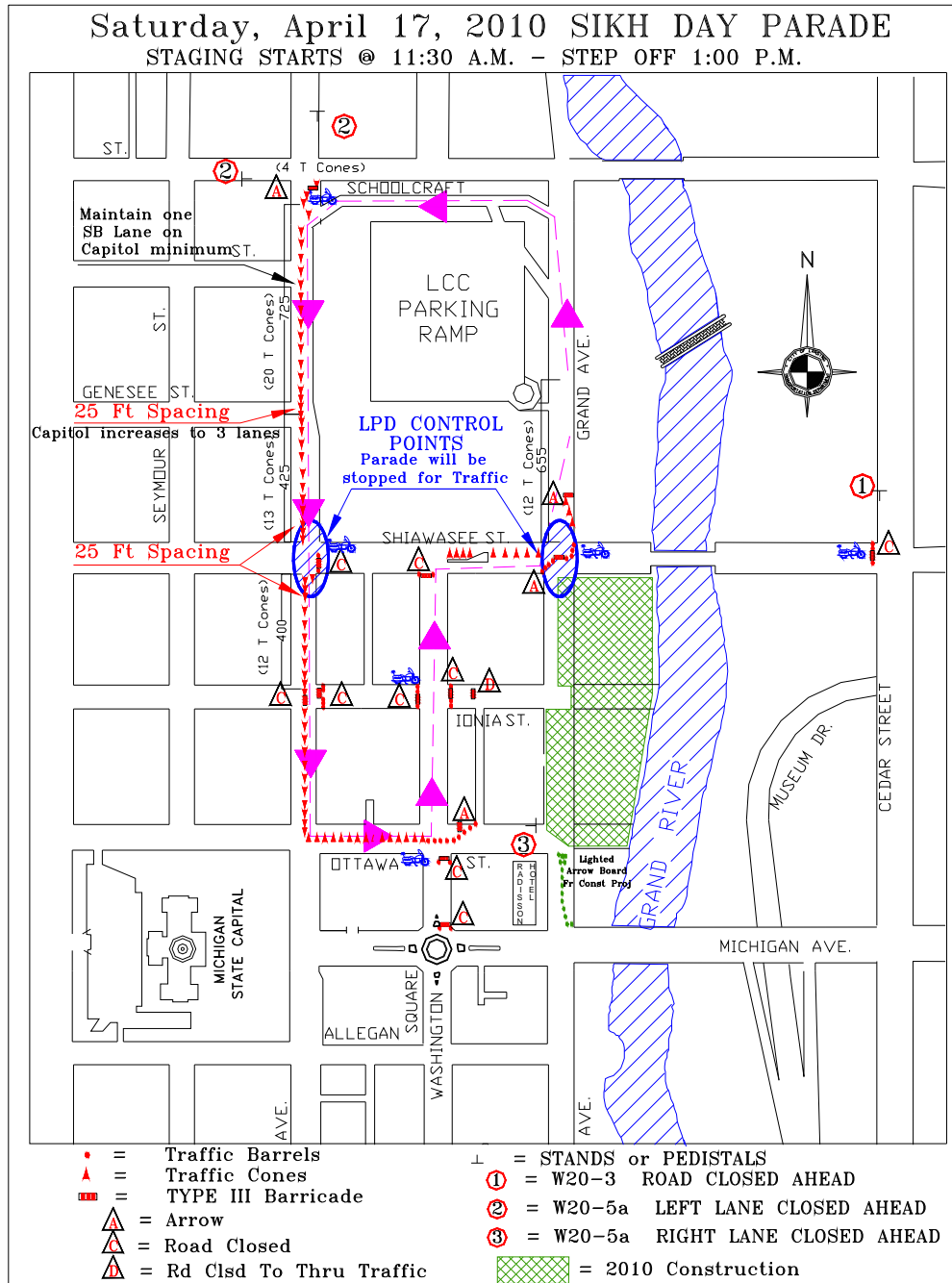
DEPARTMENT OF PLANNING AND NEIGHBORHOOD DEVELOPMENT

219 N. GRAND AVENUE • LANSING, MI 48933-1317 • (517) 483-4240 • FAX: (517) 483-4395

TRANSPORTATION AND PARKING OFFICE

Virg Bernero, Mayor

Parade Route and Barricading Map



Please visit www.lansingmi.gov for colored map and additional information.